

# MINI RETRACTOR®

**COMPACT  
SIZE**



The Mini Retractor® features all of the benefits and versatility of the standard Recoiler in a compact size. Measuring only 1-3/4"W x 2-3/4"L x 7/8"D, the Mini Retractor can be mounted on any of its three planes. It is available with many of the ends shown below. For Top Mount versions (add a "T" after the item number).

ITEM NO.	DESCRIPTION
SK-4428	Mini Retractor w/Small Eyelet (4' Cable)
SK-4418	Mini Retractor w/Rect. Metal Plate (4' Cable)
SK-4420*	Mini Retractor w/1-1/2" Rnd Flex End* (4' Cable)
SK-4432T	Mini Retractor w/7/8" Rnd End - Top Exit (4' Cable)
SK-4488-12	Mini Retractor w/1" Sq. Flex. Tuit & Alt. Exit (4' Cable)

\* U.S. Patent No. 5,565,848

# TEARDROP RETRACTOR®

**UNIQUE  
SHAPE  
EASY  
MOUNTING**



The Tear Drop® Retractor® offers mounting and usage flexibility. Its angled sides make it uniquely suited for POP displays and counter-top applications. It measures: 1-3/4"W x 2-1/2" L x 7/8"D, uses coated aircraft cable for strength, and is available with many of the ends shown below.

ITEM NO.	DESCRIPTION
SK-44TD28	Tear Drop Retractor w/Small Eyelet (4' Cable)
SK-44TD10	Tear Drop Retractor w/Collar Adj. Lasso (4' Cable)
SK-44TD24	Tear Drop Retractor w/Phone Connector (4' Cable)
SK-44TD33	Tear Drop Retractor w/Half Tuit (4' Cable)
SK-44TD38	Tear Drop Retractor w/1" Sq. L Plate (4' Cable)

# MICROMINI RETRACTOR®

**SPACE  
SAVING  
SIZE**



Despite its small size, the Micro Mini® Retractor® offers strong steel coated aircraft cable in a square container measuring only 1-9/16"W x 1-9/16"L x 9/16"D. It will provide security and merchandising placement in many different applications. Use in POP displays or on open shelves or counters. Cable ends shown below.

ITEM NO.	DESCRIPTION
SK-4328	Micro Mini Retractor w/Small Eyelet (4' Cable)
SK-4315	Micro Mini Retractor w/Mini Slim-Line Tuit (4' Cable)
SK-4316	Micro Mini Retractor w/Removable Tuit (4' Cable)
SK-4335	Micro Mini Retractor w/Ant Plug (4' Cable)
SK-4388-12	Micro Mini Retractor w/1" Sq. Flex. Tuit & Alt. Exit (4' Cable)

## Available Cable Ends (See Page 21 For Adhesives)

<b>Swivel #5</b> Keying Style .187" dia., size 1/0	<b>Carabineer #6</b> Keying Style 1-7/8" x 1"	<b>Collar Adj. Lasso #9</b> 5/15" dia. x 3/16"	<b>Collar Adj. Lasso #10</b> 1/4" dia. x 3/16"	<b>Swivel Snap Hooks #11</b> 3/4" dia. x 2-3/4"	<b>1" Sq. Flexible Tuit #12</b> 1" sq. x 1/2"	<b>Heavy Duty Adj. Lasso #13</b> 3/4" dia. x 1-15/16"	<b>Medium Duty Adj. Lasso #14</b> 1/2" dia. x 1-1/4"
<b>Mini Slim-Line Tuit #15</b> 1" dia. x 5/8"	<b>Removable Tuit #16</b> 1-1/4" dia. x 3/8"	<b>BB Metal Tuit #17</b> 3/4" x 1"	<b>Metal Tuit #18</b> 7/8" x 1-3/8"	<b>Flexible Round End* #20</b> 1-1/2" dia.	<b>Round Plug #21</b> 1-1/4" dia. x 1/2"H	<b>Button Stop #22</b> 1/4" dia. x 1/4"	<b>Lasso #23</b> 3/8" x 7/16" w/1" Loop
<b>Phone Connector #24</b> 1/4" x 3/8" x 1/2"	<b>Mushroom End #25</b> Available Attached or w/Stripped Wire 1/2" dia. x 1/2"	<b>Rectangular Plug #27</b> 1" x 2" x 1/2"H	<b>Small Eyelet #28</b> 3/16" ID - 11/32" OD	<b>Large Eyelet #29</b> 1/4" ID - 7/16" OD	<b>Round Tuit #30</b> 1-1/2" dia.	<b>Round Tuit #31</b> 1-1/4" dia.	<b>Round Tuit #32</b> 7/8" dia.
<b>Half Tuit End #33</b> 1-1/2" dia. x 3/4"	<b>Swivel w/Strap #34</b> 3/4" dia. x 1-3/8"	<b>Ant Plug #35</b> 7/16" x 11/16" x 9/16"H	<b>Adjustable Lasso #36</b> 1/2" x 1-1/4" x 3/8"D	<b>L Plate #37</b> 1-1/2" x 2"	<b>L Plate #38</b> 1" x 1" sq.	<b>Bug Plug #39</b> 1" x 1" sq. x 1/2"H	<b>Round Disk Tuit #40</b> 1-5/8" dia.

# THE SMALL ONE RETRACTOR®

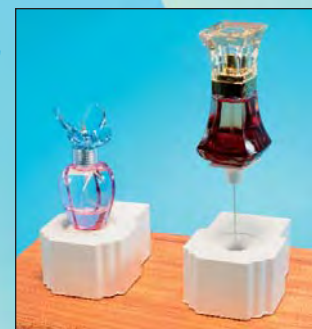


**ULTRA  
SPACE  
SAVING  
SIZE**

ITEM NO.	DESCRIPTION
SK-4128	The Small One Retractor w/Small Eyelet
SK-4115	The Small One Retractor w/Slim-Line Tuit
SK-4116	The Small One Retractor w/Removable Tuit
SK-4135	The Small One Retractor w/Ant Plug
SK-4188	The Small One Retractor w/1" Square Flexible Tuit

# THE SE-KURE DISPLAY CADDY

**A SIMPLER WAY  
TO DISPLAY SMALL  
MERCHANDISE**



ITEM NO.	DESCRIPTION
SK-4712M-W	The White Se-Kure Display Caddy
SK-4712M	The Black Se-Kure Display Caddy



3714 Runge Street  
Franklin Park, IL 60131  
1-(800) 322-2435  
(847) 288-1111  
Fax: (847) 288-9999

On the Web:  
[www.se-kure.com](http://www.se-kure.com)  
Email:  
[info@se-kure.com](mailto:info@se-kure.com)

