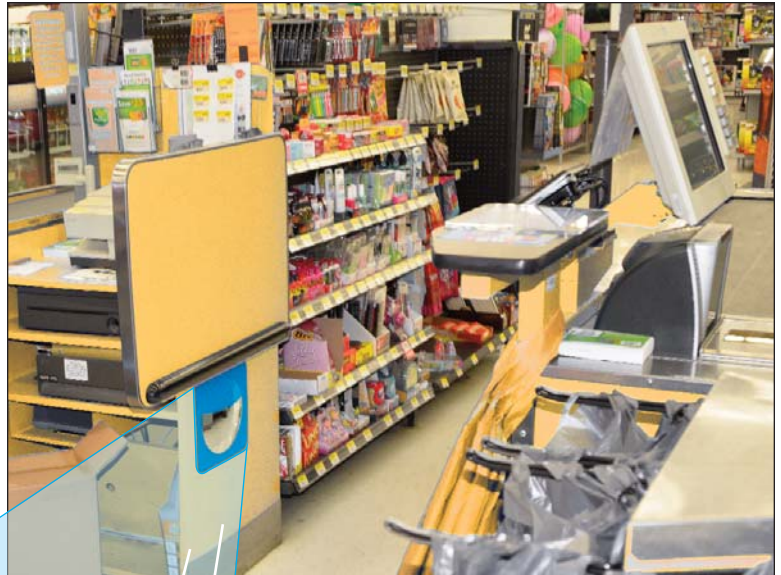




The BOB* Mirror

**The Bottom of the Basket Mirror*

- **Quick & Easy Install**
- **Deters Theft**
- **Reduces Oversight**
- **Second Surface Printing**
- **Durable**



- **Light Weight Mirrored Acrylic Provides Bright, Clear Image**
- **Top of Convex Has Vanity Shield**
- **Rounded Corners Prevent Snags**
- **Available in Custom Colors**
- **Design Matches Any Decor**



Se-Kure Controls



SCI-1017



Se-Kure Controls BOB Mirror Instructions (BOB - BOTTOM OF THE BASKET MIRROR)



Installing the BOB Mirror

1. Locate and clean the surface on the 4 corners of the mirror back where it will be mounted. Clean the surface with an alcohol prep pad then **Wipe the Surface Dry with a Clean Paper Towel**.



Alcohol Prep Pads are Included in the Kit



Clean with Alcohol

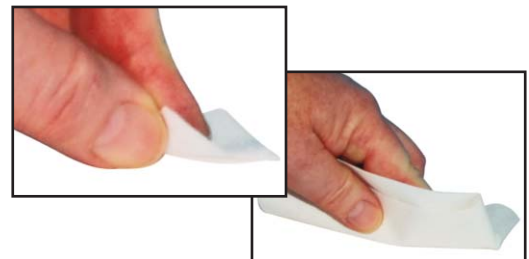


Dry with Paper Towel

2. Remove the carrier paper from the double adhesive (included in the kit) and **press it FIRMLY into place** on the 4 back corners of the mirror that you have **cleaned and dried** with the alcohol prep.



3. Locate, clean, and dry the area on the checkout aisle where you have determined the mirror to be placed.



4. Remove the protective film from the mirror surface; you will see a label on the film marked **PEEL**. Press the BOB Mirror onto the checkout wall making sure the mirrored portion is on the bottom and the blue masked area is on top as shown. Press the BOB Mirror **FIRMLY** into place to make sure the adhesive has made a good bond.



Register View

Se-Kure Controls,® Inc.

3714 Runge Street • Franklin Pk., IL 60131-1112 • 1-800-322-2435 • (847) 288-1111 • Fax: (847) 288-9999

www.se-kure.com • email: info@se-kure.com

PN 66867 SCI-1046